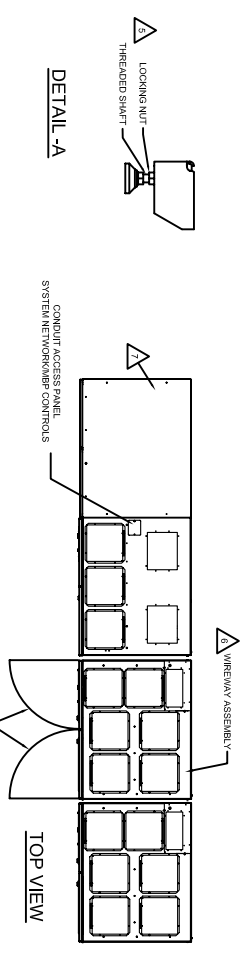
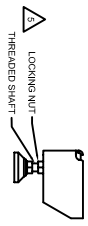


TYPICAL INSTALLATION, NOT SITE SPECIFIC.

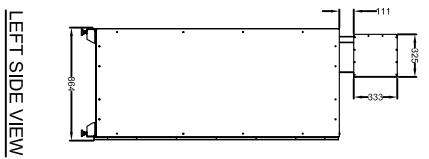


DETAIL -A

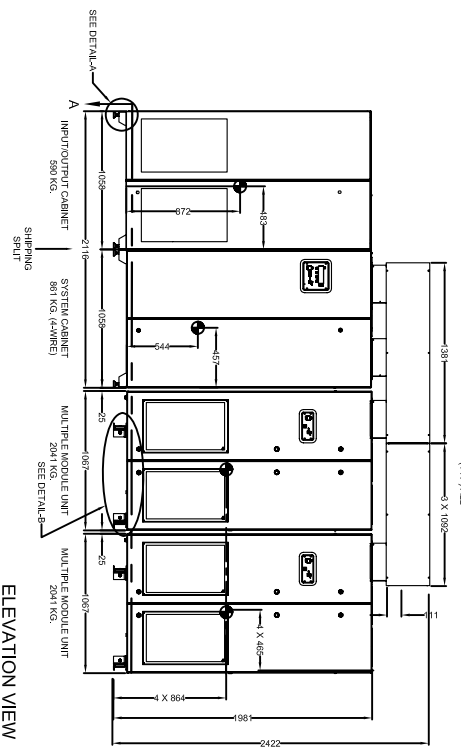


NOTES: UNLESS OTHERWISE SPECIFIED

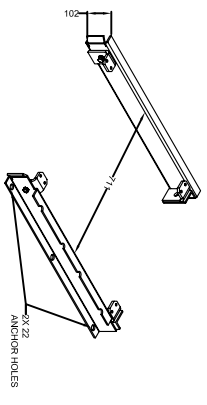
1. APPLICABLE STANDARDS AND SPECIFICATIONS: ASME Y14.5M-1994 DIMENSIONING AND TOLERANCING.
2. SIDE AND REAR ACCESS IS NOT REQUIRED FOR MAINTENANCE. FRONT MAINTENANCE ACCESS FOR LIVE PARTS IS REQUIRED IN ACCORDANCE WITH APPLICABLE CODES. LEAVE 51 mm CLEARANCE BETWEEN THE WALL AND CABINET REAR.
3. THE CEILING HEIGHT MUST BE A MINIMUM OF 2439 mm.
4. POSITION CABINETS AS SHOWN STARTING WITH THE FURTHEST CABINET.
5. ADJUST LEVELING FEET ON THE INPUT/OUTPUT CABINET AND SYSTEM CABINET UNTIL A CABINET HEIGHT OF 1881 mm IS ACHIEVED.
6. THE WIREWAY IS SHIPPED SEPARATE FROM THE CABINETS.
7. REAR ANCHOR BOLT REFERENCE LINE PER SHT. 3.
8. FRONT ANCHOR BOLT REFERENCE LINE PER SHT. 3.
9. ANCHOR BOLT HOLES MUST BE AT LEAST 305 mm FROM THE EDGE OF THE SLAB.
10. ALL DIMENSIONS IN MILLIMETERS UNLESS OTHERWISE SPECIFIED. METRIC UNITS FOR REFERENCE ONLY. EQUIPMENT WILL BE DESIGNED AND MANUFACTURED USING ENGLISH UNITS. RAILS CAN BE DETACHED FROM CABINETS FOR INSTALLATION.



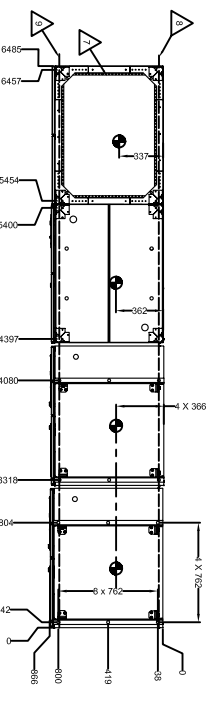
LEFT SIDE VIEW



ELEVATION VIEW



DETAIL -B
CLEAT ANCHOR HOLES



SECTION A-A PLAN VIEW

FOR INFORMATIONAL PURPOSES ONLY, NOT FOR CONSTRUCTION.

<p>ACTIVE COVER, INC. COMPANY LOGO, TRADEMARK AND SERVICE MARK. ALL DIMENSIONS IN THIS SHEET ARE UNLESS OTHERWISE SPECIFIED. THIS DRAWING IS THE PROPERTY OF ACTIVE COVER, INC. AND IS NOT TO BE REPRODUCED OR TRANSMITTED IN ANY FORM OR BY ANY MEANS, ELECTRONIC OR MECHANICAL, INCLUDING PHOTOCOPYING, RECORDING, OR BY ANY INFORMATION STORAGE AND RETRIEVAL SYSTEM, WITHOUT THE WRITTEN PERMISSION OF ACTIVE COVER, INC.</p>		<p>UNLESS OTHERWISE SPECIFIED, ALL DIMENSIONS IN THIS SHEET ARE UNLESS OTHERWISE SPECIFIED. THIS DRAWING IS THE PROPERTY OF ACTIVE COVER, INC. AND IS NOT TO BE REPRODUCED OR TRANSMITTED IN ANY FORM OR BY ANY MEANS, ELECTRONIC OR MECHANICAL, INCLUDING PHOTOCOPYING, RECORDING, OR BY ANY INFORMATION STORAGE AND RETRIEVAL SYSTEM, WITHOUT THE WRITTEN PERMISSION OF ACTIVE COVER, INC.</p>		<p>DO NOT SCALE DRAWING</p>		<p>ACTIVE POWER AUSTIN TEXAS</p>	
<p>THIRD ANGLE PROJECTION</p>	<p>W/VIEW</p>	<p>APPROVALS</p>	<p>DATE</p>	<p>TITLE</p>	<p>DATE</p>	<p>BY</p>	<p>DATE</p>
<p>SEE NOTES</p>	<p>SEE NOTES</p>	<p>JGH</p>	<p>2/11/09</p>	<p>INSTALLATION OVERVIEW</p>	<p>2/13/09</p>	<p>PMR</p>	<p>2/13/09</p>
<p>SEE NOTES</p>	<p>SEE NOTES</p>	<p>N/A</p>	<p>N/A</p>	<p>CS UPS 5001Z, 4W (OUTLINE)</p>	<p>N/A</p>	<p>N/A</p>	<p>2 OF 10</p>