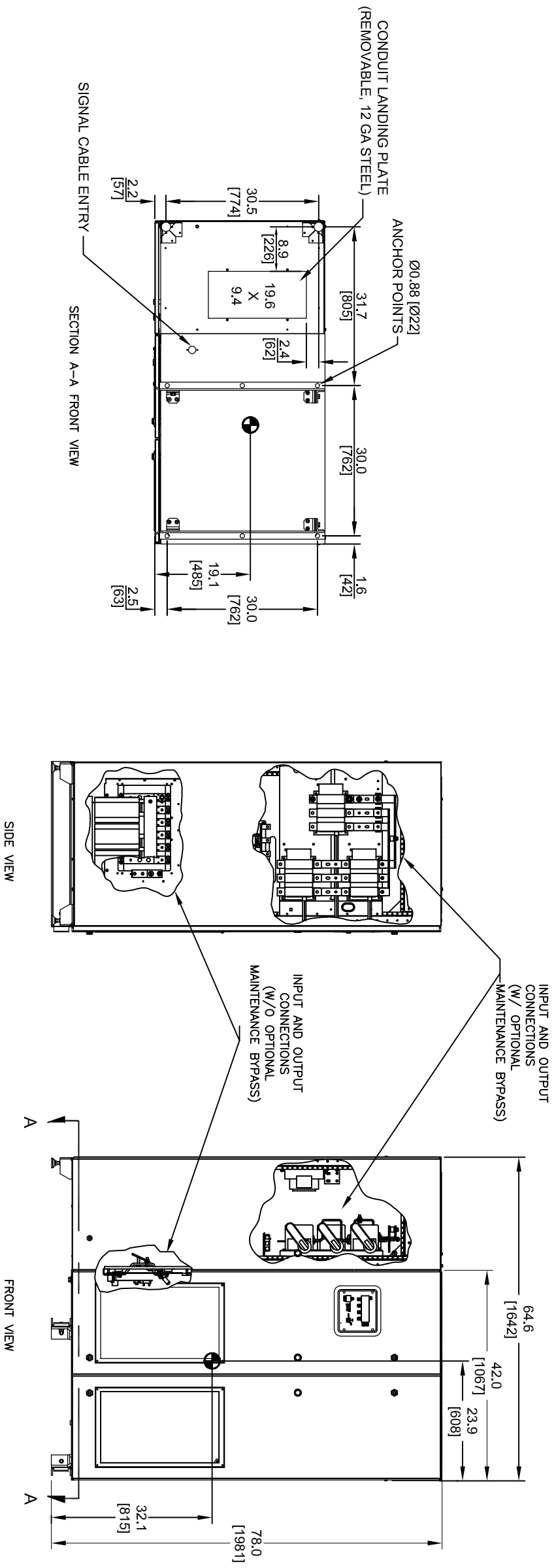
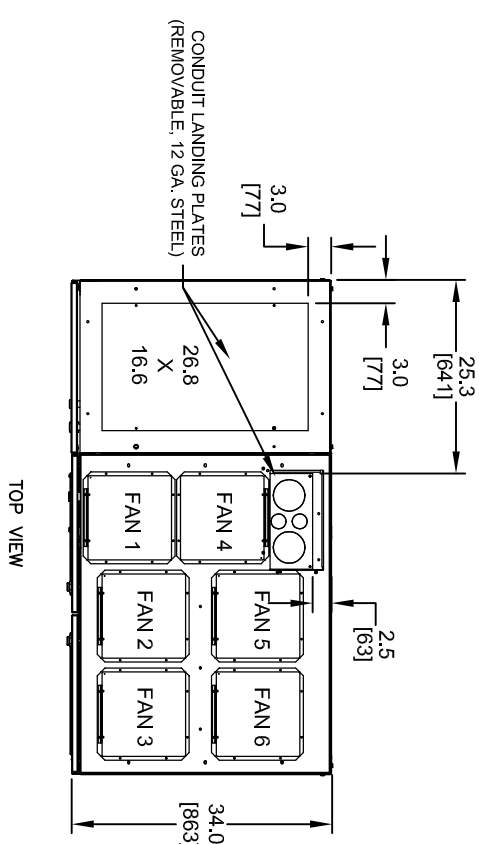
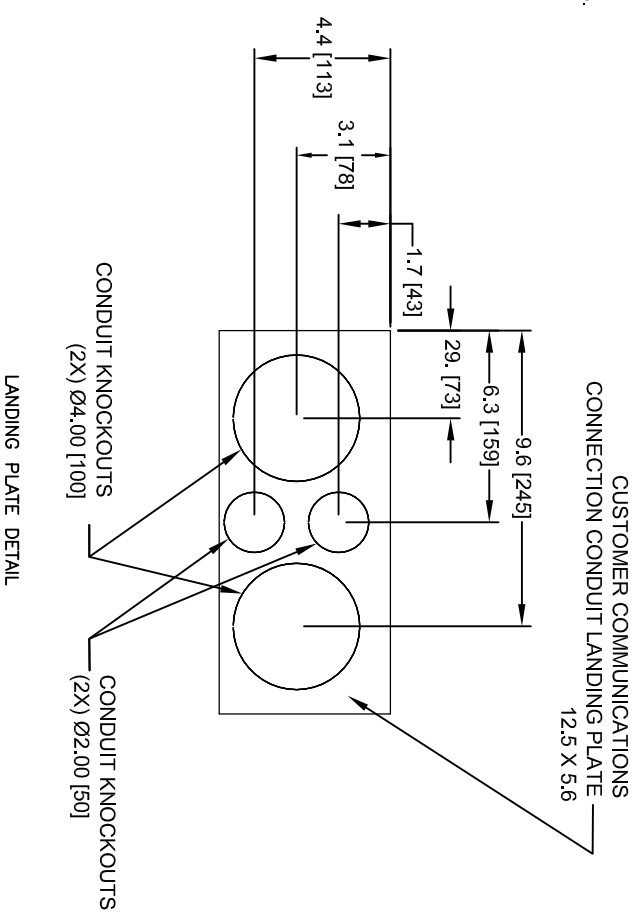


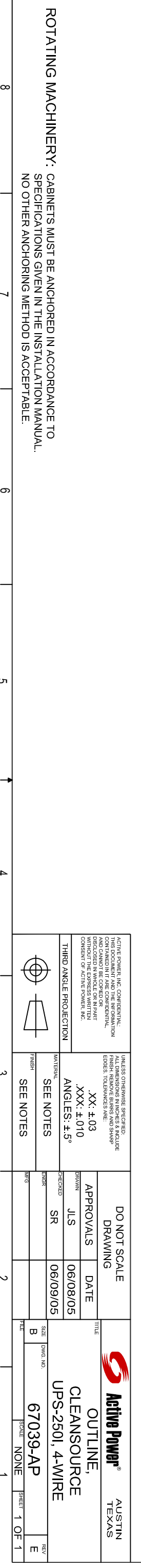
- NOTES:** UNLESS OTHERWISE SPECIFIED
1. APPLICABLE STANDARDS AND SPECIFICATIONS ASME Y14.5M-1994 DIMENSIONING AND TOLERANCING.
 2. ANCHOR BOLT HOLES MUST BE AT LEAST 7.5" FROM THE EDGE OF THE SLAB.
 3. MOUNTING AND CONNECTIONS SHOWN FOR REFERENCE ONLY. SEE INSTALLATION MANUAL FOR MOUNTING AND CONNECTION DETAILS.



CLEANSOURCE UPS 2501
4835 LBS

REV	DESCRIPTION	BY	DATE	APPR
A	PRODUCTION RELEASE ECN 11300	WH	7/21/2002	JH
B	CHG NOTES ECN 11772	WH	10/4/2002	JH
C	ECN 15936	CSN	5/22/2003	RER
D	ECN 18920	LRR	2/4/2004	SR
E	NEW DRS ECN 28272	JLS	06/08/2005	SR

ACTIVE POWER INC. CONFIDENTIAL. ALL DIMENSIONS IN INCHES & INCLUDE FINISH REMOVE BARRS AND SHARP EDGES. TOLERANCES ARE: .XX: ±.03 .XXX: ±.010 ANGLES: ±.5° THIRD ANGLE PROJECTION		UNLESS OTHERWISE SPECIFIED: ALL DIMENSIONS IN INCHES & INCLUDE FINISH REMOVE BARRS AND SHARP EDGES. TOLERANCES ARE: .XX: ±.03 .XXX: ±.010 ANGLES: ±.5° THIRD ANGLE PROJECTION		DO NOT SCALE DRAWING APPROVALS DATE 06/08/05 06/09/05		TITLE Active Power OUTLINE, CLEANSOURCE UPS-2501, 4-WIRE 67039-AP		AUSTIN TEXAS REV E	
ACTIVE POWER INC. CONFIDENTIAL. ALL DIMENSIONS IN INCHES & INCLUDE FINISH REMOVE BARRS AND SHARP EDGES. TOLERANCES ARE: .XX: ±.03 .XXX: ±.010 ANGLES: ±.5° THIRD ANGLE PROJECTION		UNLESS OTHERWISE SPECIFIED: ALL DIMENSIONS IN INCHES & INCLUDE FINISH REMOVE BARRS AND SHARP EDGES. TOLERANCES ARE: .XX: ±.03 .XXX: ±.010 ANGLES: ±.5° THIRD ANGLE PROJECTION		DO NOT SCALE DRAWING APPROVALS DATE 06/08/05 06/09/05		TITLE Active Power OUTLINE, CLEANSOURCE UPS-2501, 4-WIRE 67039-AP		AUSTIN TEXAS REV E	



ROTATING MACHINERY: CABINETS MUST BE ANCHORED IN ACCORDANCE TO SPECIFICATIONS GIVEN IN THE INSTALLATION MANUAL. NO OTHER ANCHORING METHOD IS ACCEPTABLE.