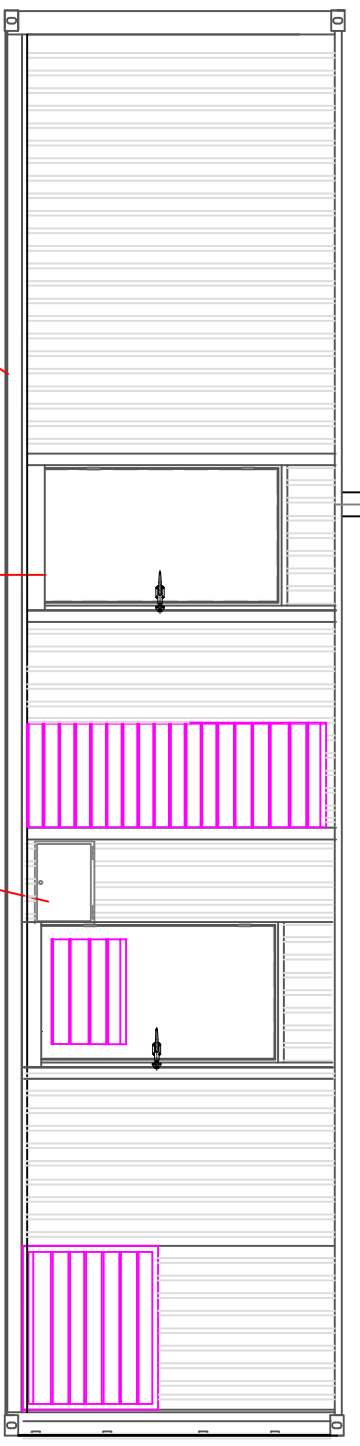


EXHAUST OUTLET C/W RAIN CAP
EXIT TO SUIT SILENCER &
REMOVABLE FOR SHIPPING.



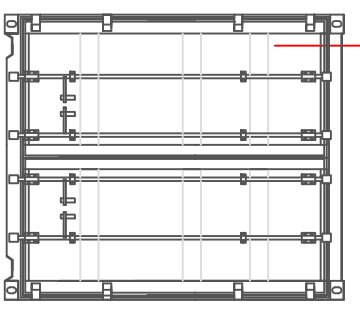
STRENGTHENING
STRIP UNDER
CONTAINER SIDE
CHANNELS AND
BUNDED ENGINE
ROOM FLOOR

DOOR & FRAME SET C/W SLAM
FASTENER WITH INTERNAL PANIC
RELEASE & CHECK STRAP BOLTED
INTO RHS APERTURE.

INPUT/OUTPUT
CABLING
CONNECTION
POINT

***** GENERAL CONSTRUCTION *****
MODIFIED ISO CONTAINER
3mm FLOOR PLATES OVER TIMBER FLOORS
100mm MINERAL WOOL TREATMENT ENGINE
COMPARTMENT AND 50mm UPS
0.7mm PERF AND 1.2mm INNER SKIN ZINTEC
TRAYS
EXTERNAL WALL & ROOF COLOUR: BLACK
INTERNAL WALL & ROOF COLOUR: WHITE
FLOOR INTERNAL COLOUR: BLACK NON SLIP.
FLOOR UNDERSIDE COLOUR: BLACK
UNDERSEAL.
NOISE LEVEL 85db(A) @ 1mtr
8HR DAY TANK AT 75% LOAD

INNER FACE OF END
DOORS TO BE PACKED
WITH MINERAL WOOL
CORRUGATIONS AND
RETAINED WITH
MELINEX & PERF.



THIS IS NOT A DESIGN DRAWING AND IS ISSUED FOR INFORMATION ONLY.

<small>THIS DRAWING IS THE PROPERTY OF ACTIVE POWER. IT IS TO BE USED FOR THE PROJECT AND NOT TO BE REPRODUCED OR TRANSMITTED IN ANY FORM OR BY ANY MEANS, ELECTRONIC OR MECHANICAL, INCLUDING PHOTOCOPYING, RECORDING, OR BY ANY INFORMATION STORAGE AND RETRIEVAL SYSTEM. WITHOUT THE WRITTEN PERMISSION OF ACTIVE POWER.</small>	
	TITLE: 800KW POWERHOUSE PROJECT: 800KW POWERHOUSE DRAWN BY: KB CHECKED BY: ML APPROVED BY: U-SH DATE: 28/08/08 FILENAME: 800KW POWERHOUSE ARTICLE NO./REFERENCE: AP308999-014 EDITION: B SHEET: 4/4